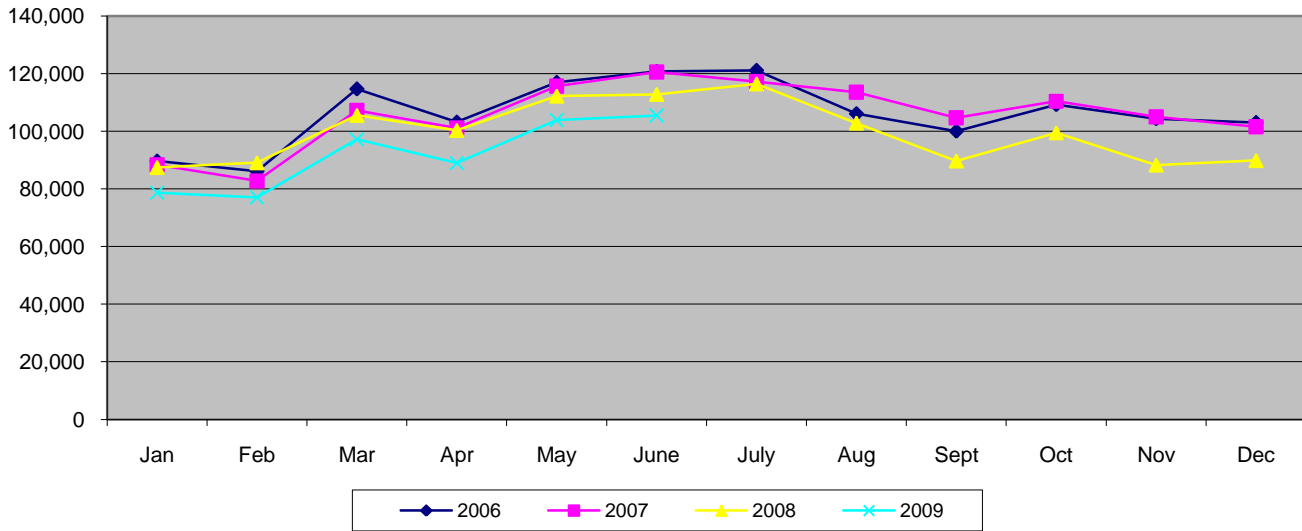
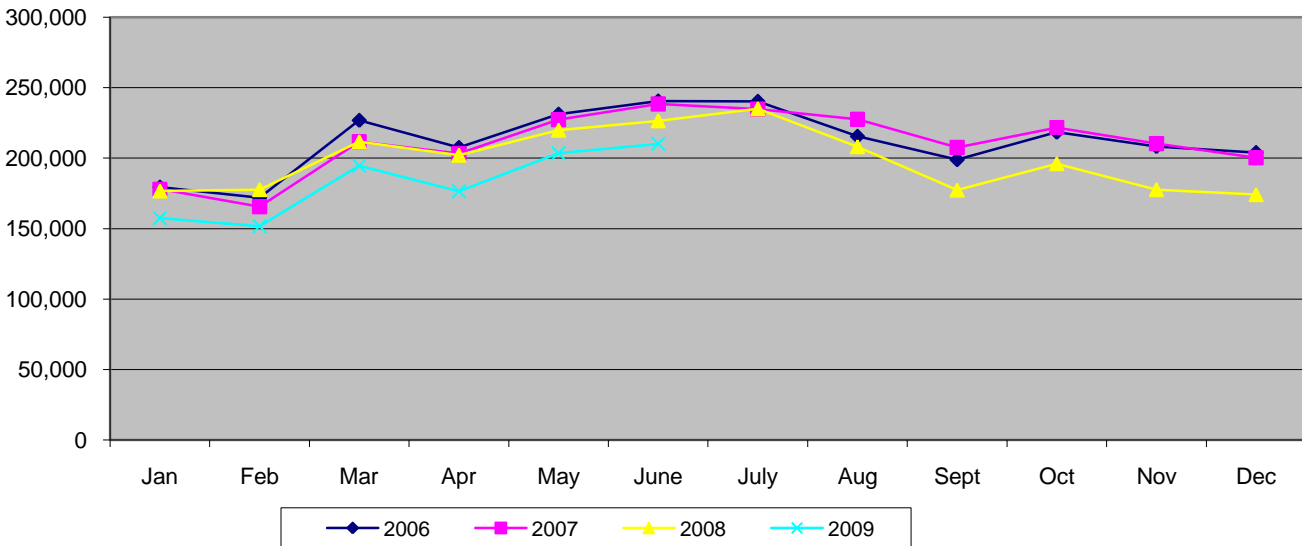


### Enplaned Passengers



Year	Jan	Feb	Mar	Apr	May	June	July	Aug	Sept	Oct	Nov	Dec
2006	89,652	86,147	114,658	103,157	116,933	120,692	121,085	106,078	100,021	109,252	104,363	103,017
2007	88,325	82,731	107,198	101,085	115,677	120,522	117,170	113,507	104,622	110,371	104,970	101,519
2008	87,428	89,060	105,487	100,282	112,170	112,788	116,397	102,813	89,688	99,466	88,270	89,836
2009	78,685	76,974	97,164	88,944	103,874	105,388						

### Total Passengers



Year	Jan	Feb	Mar	Apr	May	June	July	Aug	Sept	Oct	Nov	Dec
2006	179,487	171,978	226,846	207,577	231,227	240,545	240,304	215,509	198,918	218,392	208,300	204,008
2007	177,938	165,556	211,664	203,221	227,378	238,456	234,722	227,447	207,571	221,707	210,230	200,239
2008	176,679	177,682	211,580	202,061	219,789	226,404	234,938	208,068	177,341	196,059	177,671	174,134
2009	157,355	151,747	194,618	176,381	203,478	210,131						