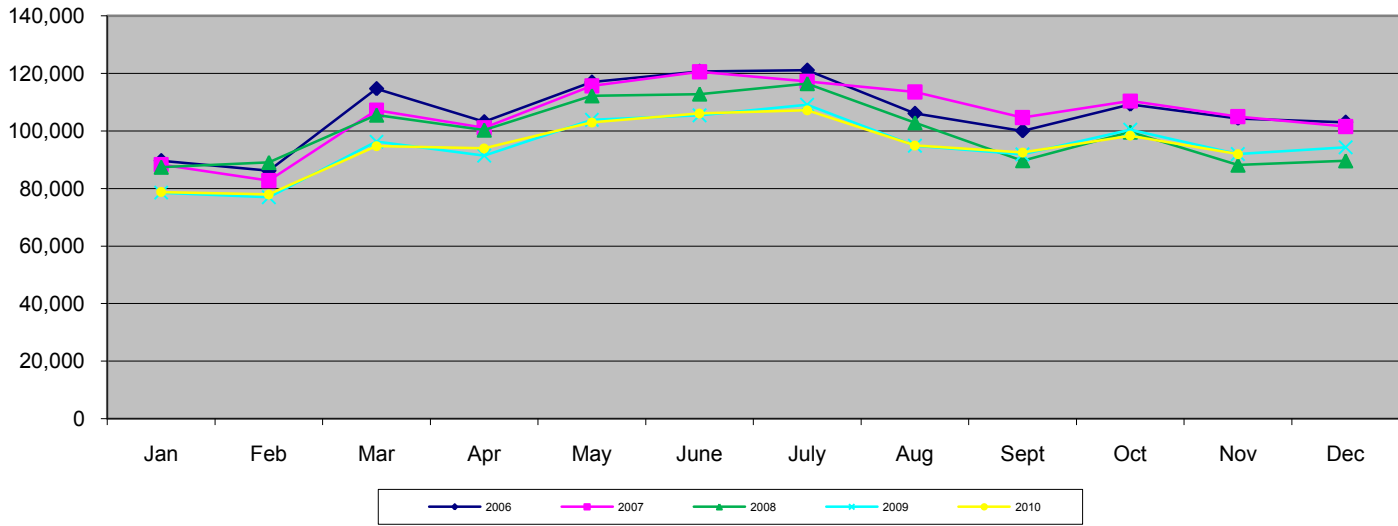
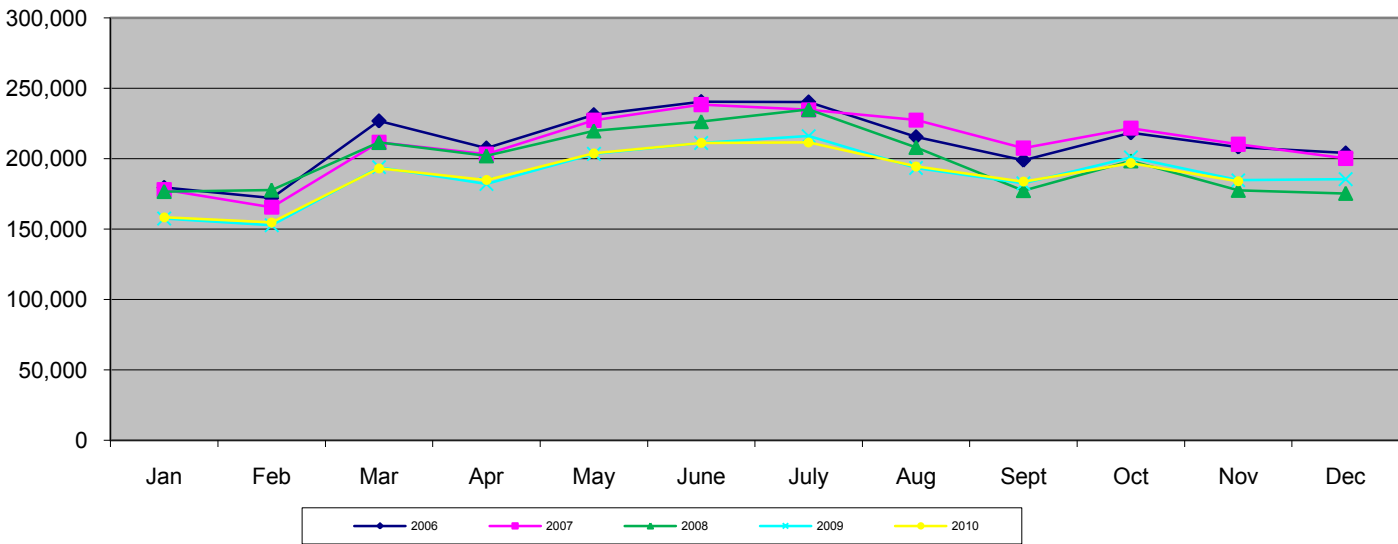


Enplaned Passengers



Year	Jan	Feb	Mar	Apr	May	June	July	Aug	Sept	Oct	Nov	Dec	Total
2006	89,652	86,147	114,658	103,157	116,933	120,692	121,085	106,078	100,021	109,252	104,363	103,017	1,275,055
2007	88,325	82,731	107,198	101,085	115,677	120,522	117,170	113,507	104,622	110,371	104,970	101,519	1,267,697
2008	87,428	89,060	105,487	100,282	112,170	112,788	116,397	102,813	89,688	99,608	88,146	89,635	1,193,502
2009	78,571	76,974	96,260	91,412	103,874	105,388	109,071	94,853	91,821	100,433	91,978	94,335	1,134,970
2010	78,740	77,919	94,712	93,920	102,938	106,056	107,169	94,944	92,497	98,309	91,966		1,039,170

Total Passengers



Year	Jan	Feb	Mar	Apr	May	June	July	Aug	Sept	Oct	Nov	Dec	Total
2006	179,487	171,978	226,846	207,577	231,227	240,545	240,304	215,509	198,918	218,392	208,300	204,008	2,543,091
2007	177,938	165,556	211,664	203,221	227,378	238,456	234,722	227,447	207,571	221,707	210,230	200,239	2,526,129
2008	176,679	177,682	211,580	202,061	219,789	226,404	234,938	208,068	177,341	198,479	177,505	175,360	2,385,886
2009	157,555	152,796	193,967	182,117	203,478	211,131	216,063	193,509	182,519	200,934	184,704	185,532	2,264,305
2010	158,421	154,701	193,163	184,821	203,814	211,196	211,524	194,568	183,695	196,942	183,993		2,076,838