

	September <u>2011</u>	September <u>2010</u>	Difference <u>10 vs 11</u>	Percent <u>(%) Change</u>	Year to Date <u>2011</u>	Year to Date <u>2010</u>	Difference <u>10 vs 11</u>	Percent <u>(%) change</u>
<b>Total Enplaned</b>	91,655	92,497	(842)	-0.91%	820,195	843,668	(23,473)	-2.78%
<b>Total Deplaned</b>	90,790	91,198	(408)	-0.45%	819,124	841,653	(22,529)	-2.68%
<b>Total Passengers</b>	182,445	183,695	(1,250)	-0.68%	1,639,319	1,685,321	(46,002)	-2.73%

**Enplaned Passengers by Airline**

	September <u>2011</u>	September <u>2010</u>	Difference <u>10 vs 11</u>	Percent <u>(%) Change</u>	Year to Date <u>2011</u>	Year to Date <u>2010</u>	Difference <u>10 vs 11</u>	Percent <u>Change</u>
<b>American Eagle</b>	18,529	18,735	(206)	-1.10%	163,766	175,692	(11,926)	-6.79%
<b>Continental Express</b>	8,845	7,798	1,047	13.43%	72,290	73,454	(1,164)	-1.58%
<b>Delta Airlines</b>	22,111	22,411	(300)	-1.34%	186,442	196,456	(10,014)	-5.10%
<b>Southwest</b>	29,108	30,586	(1,478)	-4.83%	276,702	290,593	(13,891)	-4.78%
<b>United Airlines</b>	6,942	6,765	177	2.62%	63,841	60,446	3,395	5.62%
<b>US Airways</b>	5,536	6,202	(666)	-10.74%	49,053	47,027	2,026	4.31%
<b>Vision Airlines</b>	584	0	584	100.00%	8,101	0	8,101	100.00%
<b>Total</b>	91,655	92,497	(842)	-0.91%	820,195	843,668	(23,473)	-2.78%

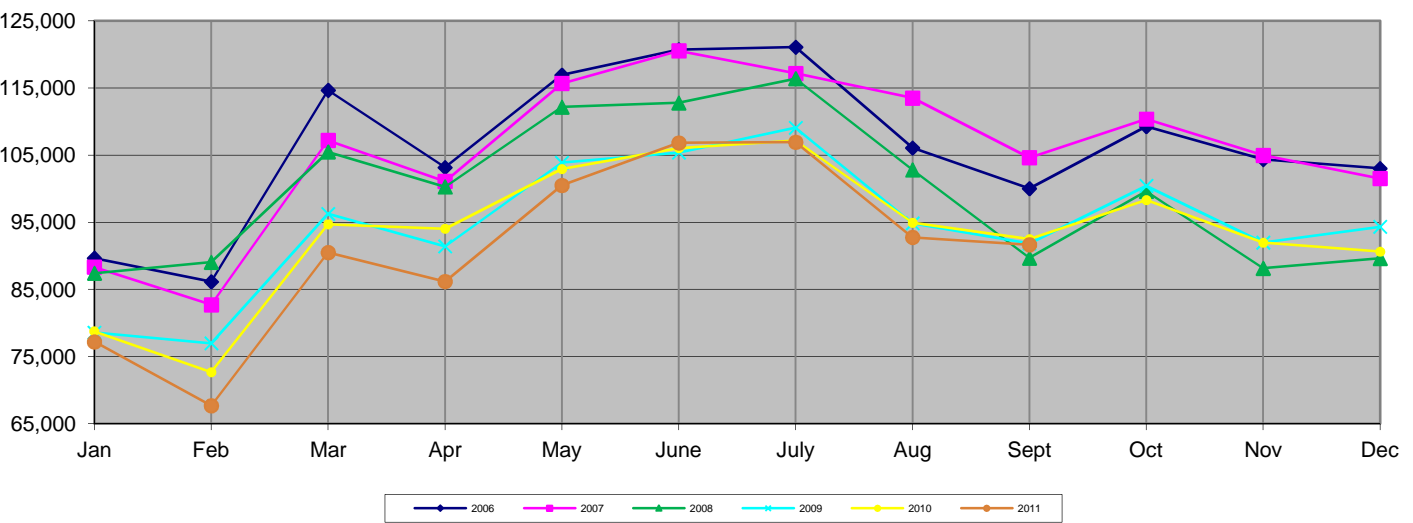
**Deplaned Passengers by Airline**

	September <u>2011</u>	September <u>2010</u>	Difference <u>10 vs 11</u>	Percent <u>(%) Change</u>	Year to Date <u>2011</u>	Year to Date <u>2010</u>	Difference <u>10 vs 11</u>	Percent <u>Change</u>
<b>American Eagle</b>	18,599	18,618	(19)	-0.10%	165,070	174,596	(9,526)	-5.46%
<b>Continental Express</b>	8,776	7,792	984	12.63%	72,208	74,117	(1,909)	-2.58%
<b>Delta Airlines</b>	22,339	21,734	605	2.78%	187,502	193,905	(6,403)	-3.30%
<b>Southwest</b>	28,401	30,065	(1,664)	-5.53%	274,216	289,871	(15,655)	-5.40%
<b>United Airlines</b>	6,905	6,774	131	1.93%	64,619	61,883	2,736	4.42%
<b>US Airways</b>	5,177	6,215	(1,038)	-16.70%	47,697	47,281	416	0.88%
<b>Vision Airlines</b>	593	0	593	100.00%	7,812	0	7,812	100.00%
<b>Total</b>	90,790	91,198	(408)	-0.45%	819,124	841,653	(22,529)	-2.68%

**Total Passengers by Airline**

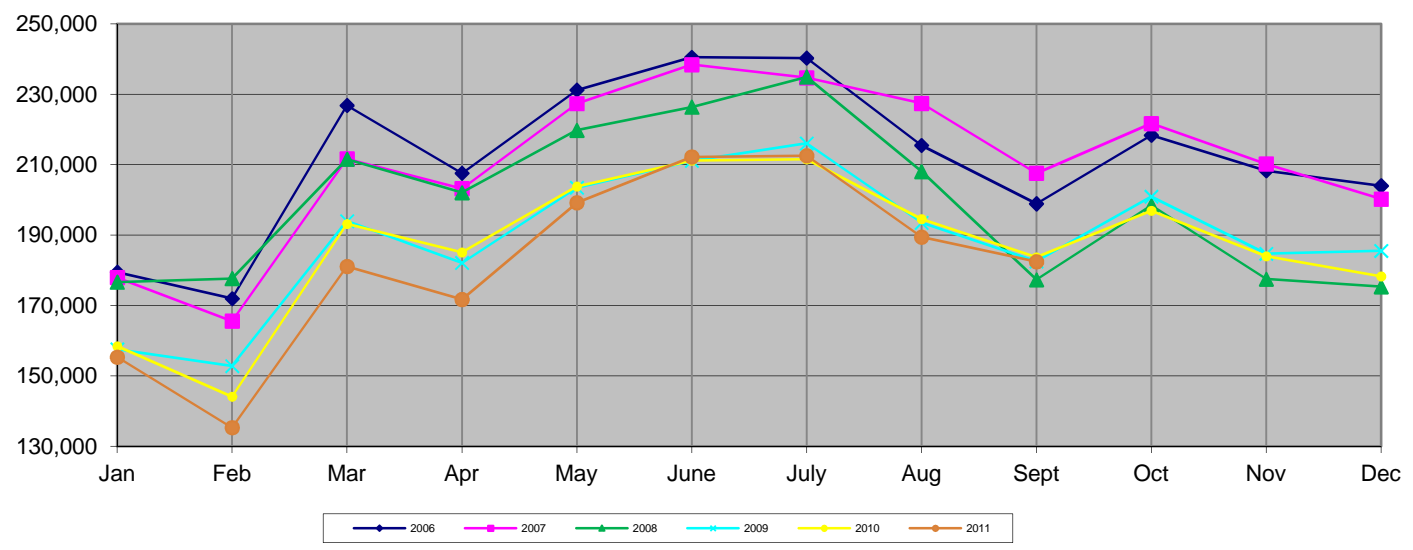
	September <u>2011</u>	September <u>2010</u>	Difference <u>10 vs 11</u>	Percent <u>(%) Change</u>	Year to Date <u>2011</u>	Year to Date <u>2010</u>	Difference <u>10 vs 11</u>	Percent <u>Change</u>
<b>American Eagle</b>	37,128	37,353	(225)	-0.60%	328,836	350,288	(21,452)	-6.12%
<b>Continental Express</b>	17,621	15,590	2,031	13.03%	144,498	147,571	(3,073)	-2.08%
<b>Delta Airlines</b>	44,450	44,145	305	0.69%	373,944	390,361	(16,417)	-4.21%
<b>Southwest</b>	57,509	60,651	(3,142)	-5.18%	550,918	580,464	(29,546)	-5.09%
<b>United Airlines</b>	13,847	13,539	308	2.27%	128,460	122,329	6,131	5.01%
<b>US Airways</b>	10,713	12,417	(1,704)	-13.72%	96,750	94,308	2,442	2.59%
<b>Vision Airlines</b>	1,177	0	1,177	100.00%	15,913	0	15,913	100.00%
<b>Total</b>	182,445	183,695	(1,250)	-0.68%	1,639,319	1,685,321	(46,002)	-2.73%

### Enplaned Passengers



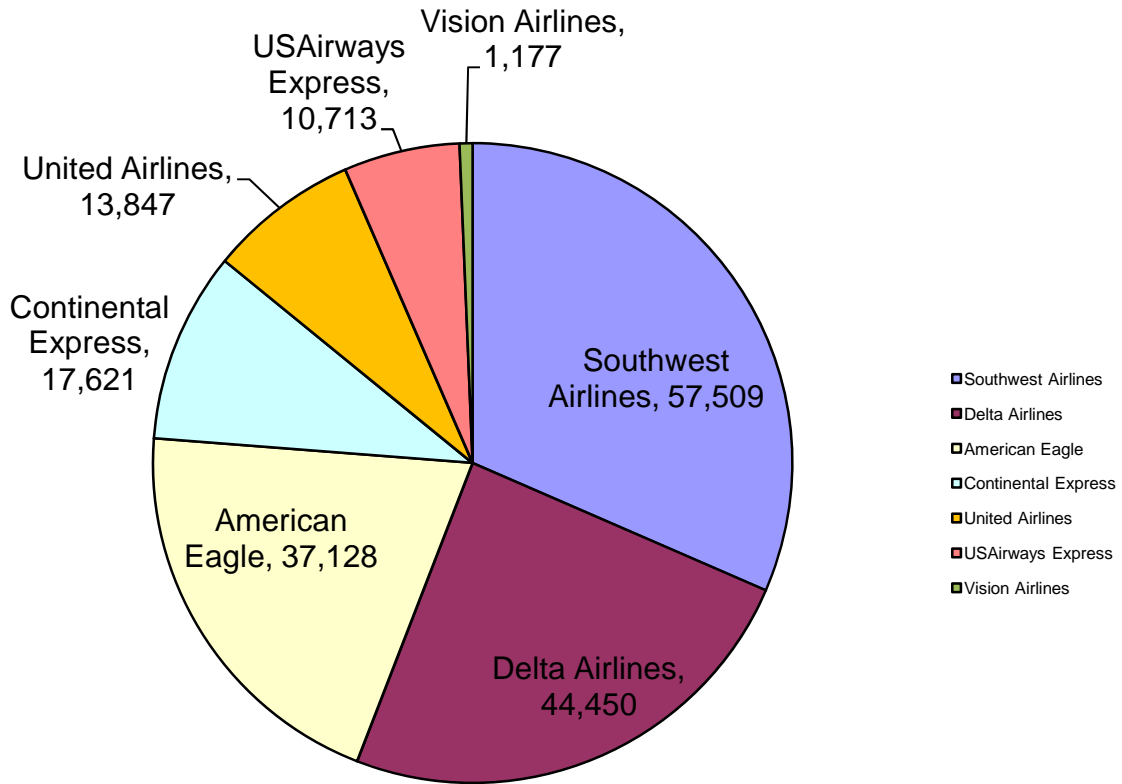
Year	Jan	Feb	Mar	Apr	May	June	July	Aug	Sept	Oct	Nov	Dec	Total
2006	89,652	86,147	114,658	103,157	116,933	120,692	121,085	106,078	100,021	109,252	104,363	103,017	1,275,055
2007	88,325	82,731	107,198	101,085	115,677	120,522	117,170	113,507	104,622	110,371	104,970	101,519	1,267,697
2008	87,428	89,060	105,487	100,282	112,170	112,788	116,397	102,813	89,688	99,608	88,146	89,635	1,193,502
2009	78,571	76,974	96,260	91,412	103,874	105,388	109,071	94,853	91,821	100,433	91,978	94,335	1,134,970
2010	78,740	72,692	94,712	94,049	102,938	106,056	107,169	94,944	92,497	98,309	91,966	90,631	1,124,703
2011	77,188	67,684	90,497	86,187	100,489	106,822	106,919	92,754	91,655				

### Total Passengers



Year	Jan	Feb	Mar	Apr	May	June	July	Aug	Sept	Oct	Nov	Dec	Total
2006	179,487	171,978	226,846	207,577	231,227	240,545	240,304	215,509	198,918	218,392	208,300	204,008	2,543,091
2007	177,938	165,556	211,664	203,221	227,378	238,456	234,722	227,447	207,571	221,707	210,230	200,239	2,526,129
2008	176,679	177,682	211,580	202,061	219,789	226,404	234,938	208,068	177,341	198,479	177,505	175,360	2,385,886
2009	157,555	152,796	193,967	182,117	203,478	211,131	216,063	193,509	182,519	200,934	184,704	185,532	2,264,305
2010	158,421	144,119	193,163	185,079	203,814	211,196	211,524	194,568	183,695	196,942	183,993	178,271	2,244,785
2011	155,322	135,309	181,095	171,718	199,200	212,233	212,561	189,436	182,445				

## September Market Share Report



<u>Airlines</u>	<u>Total Passengers</u>	<u>Market Share</u>
<b>Southwest Airlines</b>	57,509	31.52%
<b>Delta Airlines</b>	44,450	24.36%
<b>American Eagle</b>	37,128	20.35%
<b>Continental Express</b>	17,621	9.66%
<b>United Airlines</b>	13,847	7.59%
<b>USAirways Express</b>	10,713	5.87%
<b>Vision Airlines</b>	1,177	0.65%
<b>Total</b>	<b>182,445</b>	<b>100.00%</b>

**LIT**  
**Total Passengers**  
**2011 vs. 2010**

	<b>2011 Total Passengers</b>	<b>2010 Total Passengers</b>	<b>Passenger Difference 11 vs. 10</b>	<b>Percent (%) Change</b>
<b>January</b>	155,322	158,421	(3,099)	-1.96%
<b>February</b>	135,309	144,119	(8,810)	-6.11%
<b>March</b>	181,095	193,163	(12,068)	-6.25%
<b>April</b>	171,718	184,821	(13,103)	-7.09%
<b>May</b>	199,200	203,814	(4,614)	-2.26%
<b>June</b>	212,233	211,196	1,037	0.49%
<b>July</b>	212,561	211,524	1,037	0.49%
<b>August</b>	189,436	194,568	(5,132)	-2.64%
<b>September</b>	182,445	183,695	(1,250)	-0.68%
<b>October</b>		196,942		
<b>November</b>		183,993		
<b>December</b>		178,271		
<b>Total</b>	1,639,319	2,244,527		

	<b>Year-to-Date 2011</b>	<b>Year-to-Date 2010</b>	<b>Year-to-Date Passenger Difference 11 vs. 10</b>	<b>Year-to-Date Percent (%) Change</b>
<b>Total Passengers</b>	1,639,319	1,685,321	(46,002)	-2.73%